

DRAWING NUMBER
28-87

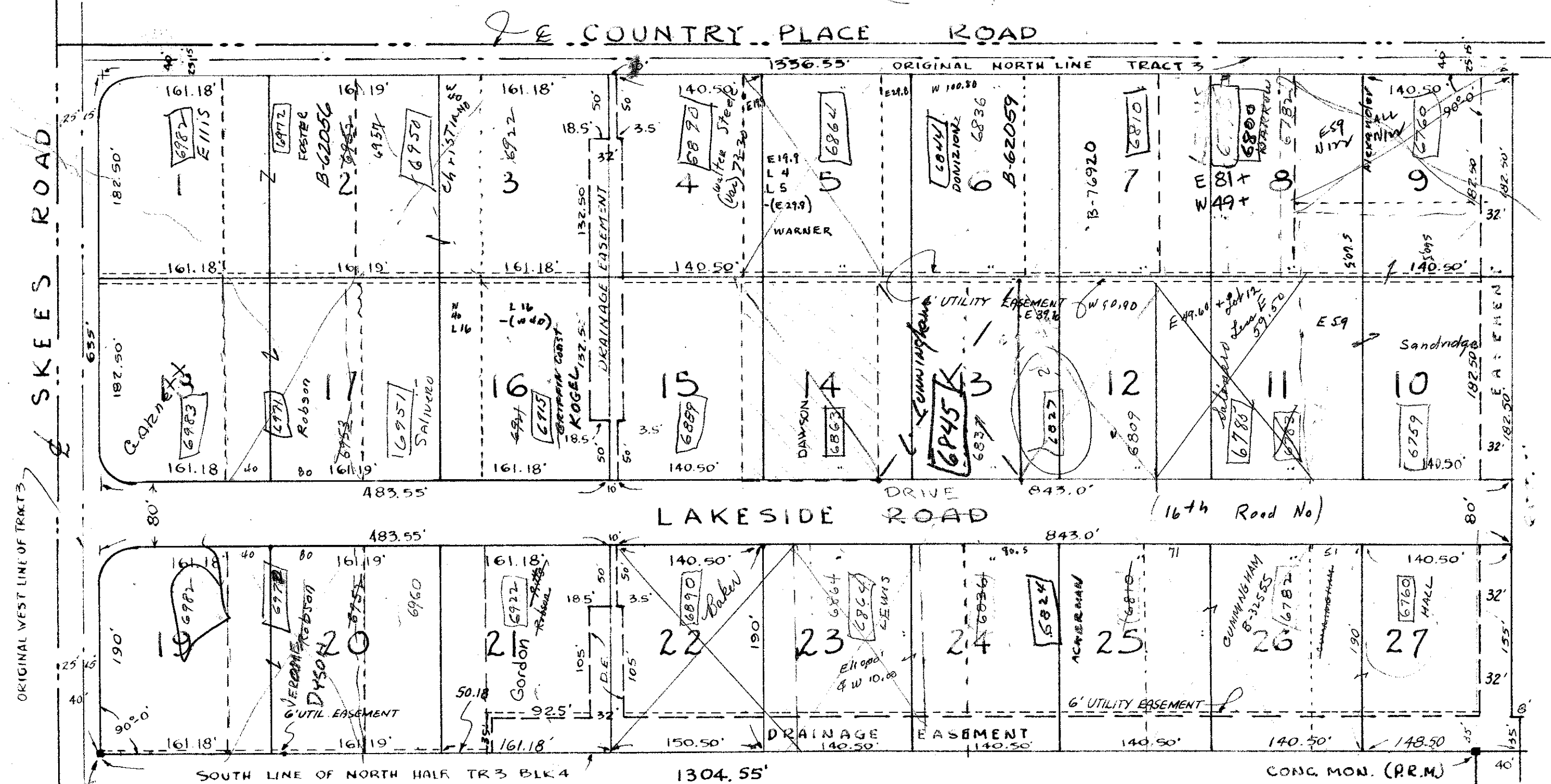
DRAWING NUMBER

DRAWING NUMBER

DRAWING NUMBER

PLANNING CORPORATION • PALM BEACH, CALIFORNIA
REGISTERED PROFESSIONAL ENGINEER
PLANNING CORPORATION • PALM BEACH, CALIFORNIA
REGISTERED PROFESSIONAL ENGINEER
PLANNING CORPORATION • PALM BEACH, CALIFORNIA
REGISTERED PROFESSIONAL ENGINEER
PLANNING CORPORATION • PALM BEACH, CALIFORNIA
REGISTERED PROFESSIONAL ENGINEER

TRACT 2 BLOCK 4
P.B. 2 PG. 46



TRACT 3, BLOCK 4
P.B. 2, PG. 46

TRACT 4 BLOCK 4
P.B. 2 PG. 46

TRACT 4 BLOCK 4
P.B. 2 PG. 46

STATE OF FLORIDA
COUNTY OF PALM BEACH, SS:

KNOW ALL MEN BY THESE PRESENTS THAT HAWKSBILL CORPORATION, A FLORIDA CORPORATION THE OWNERS OF TRACT OF LAND LYING AND BEING IN SECTION 27 & 28, TOWNSHIP 43 SOUTH, RANGE 42 EAST ALSO DESCRIBED AS TRACTS A, B, C, & D OF PALM BEACH COUNTY INDUSTRIAL PARK AS RECORDED IN PLAT BOOK 27, PAGE 109 PALM BEACH COUNTY, FLORIDA PUBLIC RECORDS SHOWN HEREON AS **LAKEWOOD RANCHES** AND MORE PARTICULARLY DESCRIBED AS FOLLOWS:

A REPLAT OF TRACTS A, B, C, & D PALM BEACH COUNTY INDUSTRIAL PARK AS RECORDED IN PLAT BOOK 27, PAGE 109, SECTIONS 27 & 28, TOWNSHIP 43 SOUTH, RANGE 42 EAST PUBLIC RECORDS OF PALM BEACH COUNTY, FLORIDA HAS CAUSED THE SAME TO BE SURVEYED AND PLATTED AS SHOWN HEREON AND DOES HEREBY DEDICATE TO THE PERPETUAL USE OF THE PUBLIC, THE ROADS, DRAINAGE AND UTILITY EASEMENTS SHOWN HEREON. IN WITNESS WHEREOF THE SAID CORPORATION HAS CAUSED THESE PRESENTS TO BE SIGNED BY ITS PRESIDENT AND ATTESTED BY ITS SECRETARY AND ITS CORPORATION SEAL AFFIXED HERETO THIS 24TH DAY OF MAY A.D. 1965

ATTEST
BY Lillian Delaware SECRETARY
HAWKSBILL CORPORATION
BY Howard W. Mason PRESIDENT

STATE OF FLORIDA
COUNTY OF PALM BEACH SS:

I HEREBY CERTIFY THAT ON THIS DAY, PERSONALLY APPEARED BEFORE ME, AN OFFICER DULY AUTHORIZED TO ADMINISTER OATHS AND TAKE ACKNOWLEDGEMENTS, HAROLD G. MAASS AND LILLIAN DELAWARE, PRESIDENT AND SECRETARY, RESPECTIVELY, OF HAWKSBILL CORPORATION, TO ME WELL KNOWN AND KNOWN TO ME TO BE THE INDIVIDUALS DESCRIBED IN AND WHO EXECUTED THE FOREGOING DEDICATION, AND THEY ACKNOWLEDGED BEFORE ME THAT THEY EXECUTED THE SAME AS SUCH OFFICERS OF SAID CORPORATION, AND WITH THE AUTHORITY OF THE BOARD OF DIRECTORS FOR THE PURPOSES THEREIN EXPRESSED.

WITNESS MY HAND AND OFFICIAL SEAL AT PALM BEACH, COUNTY OF PALM BEACH, STATE OF FLORIDA, THIS 24TH DAY OF MAY A.D. 1965

Hamilton H. Nichols
NOTARY PUBLIC

MY COMMISSION EXPIRES October 15, 1965

CERTIFICATE OF SURVEYOR

STATE OF FLORIDA
COUNTY OF PALM BEACH, SS:

I HEREBY CERTIFY THAT THE PLAT SHOWN HEREON IS A TRUE AND CORRECT REPRESENTATION OF A SURVEY MADE UNDER MY DIRECTION, OF THE PROPERTY DESCRIBED HEREON AND THAT PERMANENT REFERENCE MONUMENTS HAVE BEEN PLACED AS REQUIRED BY LAW

David H. Brady
DAVID H. BRADY
REG. LAND SURVEYOR, STATE OF FLORIDA
NO. 1166

SURVEYED NOV. 15, 1961

TURNOUT REQUIRED

LAKEWOOD RANCHES

A REPLAT OF TRACTS A, B, C, & D OF PALM BEACH COUNTY INDUSTRIAL PARK AS RECORDED IN PLAT BOOK 27, PAGE 109, SECTIONS 27 & 28 TWP. 43S RGE 42E, PUBLIC RECORDS OF PALM BEACH COUNTY, FLORIDA.

$\frac{1320}{2933} = 45.0\%$
 $\frac{2933}{250} = 11.7$ per no. (45 per 2-46)

CERTIFICATE OF APPROVAL
APPROVED July 26TH 1965, A.D.
BOARD OF COUNTY COMMISSIONERS
BY Lisa Lytal CHAIRMAN
BY J. H. ... COUNTY ENGINEER

NOTES

THERE SHALL BE NO BUILDING OR ANY TYPE OF CONSTRUCTION OR THE PLANTING OF TREES OR SHRUBS ON DRAINAGE EASEMENTS BUILDING SETBACK LINES SHALL BE AS REQUIRED BY PALM BEACH COUNTY ZONING REGULATIONS. EACH CORNER HAS A 25' FT. RADIUS UNLESS OTHERWISE NOTED. UTILITY POLES MAY NOT BE PLACED IN DRAINAGE EASEMENTS.

1000-222

28/87

LAKEWOOD RANCHES

REVISIONS	WILLIS G. WALDO CONSULTING ENGINEER	JOB NO.
SCALE 1"=100'	DRAWN <u>R</u> CHECKED <u>Wld</u>	SHEET OF 1 SHEET(S)
	DATE MAY 24-65	DRAWING NO. 5-4

27th July 2, 1965
28 87
Bertha M. Gibson

87